



National  
Operational  
Guidance

## Section

**JESIP Joint Doctrine – the  
interoperability framework**



**NFCC**  
National Fire  
Chiefs Council

Developed and maintained by the NFCC

---



## Contents

JESIP Joint Doctrine – the interoperability framework ..... 3



## JESIP Joint Doctrine – the interoperability framework

As well as improving joint working between fire and rescue services and other emergency services, this guidance emphasises the need for all responding organisations to work in a joint and co-ordinated approach. See [JESIP Vision - “Working Together – Saving Lives”](#)

### Five key principles of joint working

The Joint Doctrine sets out five principles to be applied by responders when they are determining an appropriate course of action in responding to and co-ordinating an emergency. These principles are not hierarchical and can be applied in any order throughout the incident.

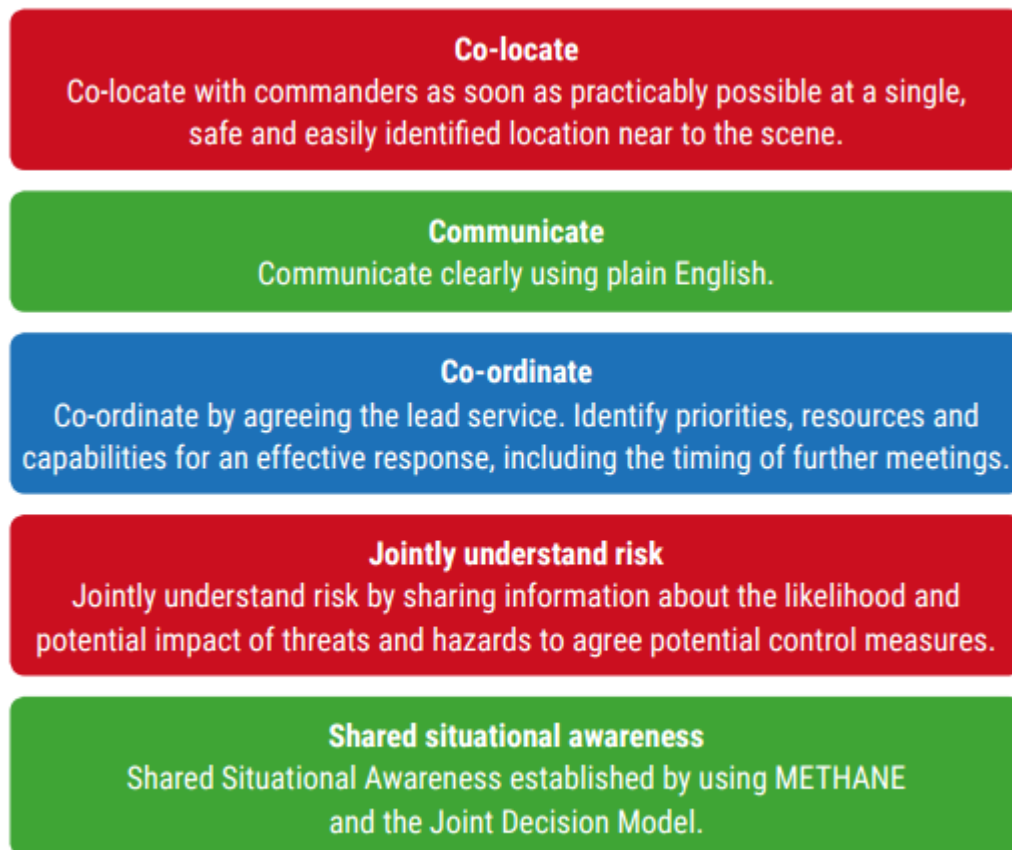


Figure 2 - Principles for joint working

Image 2: JESIP Principles

The five principles are equally relevant from a major incident perspective and relate to operations at the scene as well as at remote locations. In terms of strategic actions relating to an incident, the

strategic co-ordinating group (SCG) or equivalent is likely to be the means by which the principles are applied at a strategic level.

**Co-locate** – at a strategic coordination centre (SCC) as part of a strategic coordinating group (SCG)

**Communicate** clearly – with multiple agencies working at the SCC, and representatives from each attending the SCGs it is vital to use plain English and avoid jargon, acronyms or technical language that is not commonly understood

**Coordinate** across the agencies – one of the first requirements of an SCG will be to agree priorities and objectives using JESIP

**Jointly understand risk** – at the SCG this is likely to be risk to the wider community, to infrastructure, to the local economy or other significant but strategic risks, rather than just those present at the scene of operations

**Shared situational awareness** at the SCC using the [M/ETHANE](#) message from the scene, the Joint Decision Model and locally agreed multi-agency plans and processes